

Only One Suite Remaining!

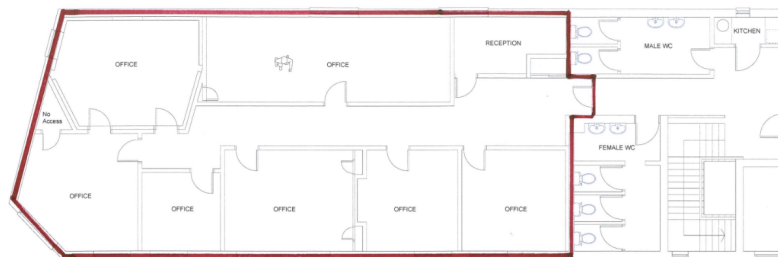
We are pleased to announce that there is now only one office suite remaining in Elta House on the Birmingham Road, Stratford - upon - Avon! After receiving a lot of interest in the suites at Elta House, Dobson-Grey have now successfully let three of the four suites. One Tenant has already taken occupancy, with the other two Tenants needing to complete some cosmetic alterations before they move in.

The last remaining suite (suite C) is situated on the first floor of Elta House and is approximately 1,191 sq ft (110.65 sq m). Elta House is situated in an excellent town centre location, with great exposure to passing traffic and has fantastic refurbishment potential. Suite C is currently segmented by partition walls into eight office units, all of a good size. There are also communal ladies and mens WC facilities along with a kitchenette shared with suite D, also on the first floor. Located in an area likely to see major regeneration with proposals from St. Joseph's for 650 new homes. This provides an incredible opportunity for any new business occupying Elta House.

Suite C would be ideal for an organisation looking to expand in 2019, the current use class is B1. Suitable Tenants could be, but are not limited to:

- Recruitment specialists
- IT management / support
- Business management companies
- Solicitors
- Website designers
- Printing studio
- Advertising agencies
- Accountants
- Events management companies
- Charities

For further information, please contact either Keri Dobson or Hattie Matthews on 01789 298 006 or kdobson@dobson-grey.co.uk / hmatthews@dobson-grey.co.uk



First Floor Plan

TO LET

T: 01789 298 006
www.dobson-grey.co.uk
1 Alsot Studios
Alsot Park
Atherstone on Stour
Stratford upon avon
CV37 8BL



For Info:

Dobson-Grey Ltd are an RICS Regulated multi disciplinary Real Estate Consultancy providing support to national and international clients throughout the UK. Our highly experienced team of professionals and dedicated personnel work directly with you at all stages of the project or development process, from Real Estate identification, financial and physical feasibility and risk assessment through to supporting and overseeing planning, design, construction safety, programming and budgeting.

For further press queries please telephone Gillian McCarthy Dobson-Grey Ltd 01789 298006